



## **Assessment of Soil Physical Properties from Different Blocks of Jaipur District, Rajasthan, India**

**Surykant Sharma <sup>a</sup>, Amreen Hasan <sup>a\*</sup>, Tarance Thomas <sup>a</sup>, Tarun Kumar <sup>a</sup>,  
Vinayak Sharma <sup>a</sup>, Amrita Sharma <sup>a</sup> and Arun Alfred David <sup>a</sup>**

<sup>a</sup> *Department of Soil Science and Agriculture Chemistry [Naini Agricultural Institute], Sam Higginbottom University of Agriculture, Technology and Sciences, Prayagraj – 211007, U.P., India.*

### **Authors' contributions**

*This work was carried out in collaboration among all authors. All authors read and approved the final manuscript.*

### **Article Information**

DOI: 10.9734/IJPSS/2022/v34i2031131

### **Open Peer Review History:**

This journal follows the Advanced Open Peer Review policy. Identity of the Reviewers, Editor(s) and additional Reviewers, peer review comments, different versions of the manuscript, comments of the editors, etc are available here: <https://www.sdiarticle5.com/review-history/87920>

**Original Research Article**

**Received 23 March 2022**  
**Accepted 03 June 2022**  
**Published 07 June 2022**

## **ABSTRACT**

The year 2021-2022, An analysis experiment was done for identification physical properties from the Rajasthan state at the Jaipur district area. For further study, twenty-seven soil samples were taken from farmer's fields in different three blocks of Jaipur district at depths 0-15 cm, 15-30 cm and 30-45 cm. The soil texture in the examined region was sandy loam. The difference of soil color also noticed in both the Air-dry condition and Moist condition and the color was light yellowish brown (10YR6/4) to brownish yellow (10YR5/8) and bulk density was from 1.24-1.34 Mg m<sup>-3</sup>, The range of particle density was from 2.27-2.34 Mg m<sup>-3</sup> and the pore space 37.77 to 43.65 %. The water retaining capacity % (WRC %) of soil ranged between 43.56 to 57.28 %. The specific gravity of soil ranged between 2.33 to 2.46. The manure and organic fertilizers are suitable for good soil health and maximum crop production at the farmer's field.

*Keywords: Physical properties; soil texture; soil color; Jaipur.*

## **1. INTRODUCTION**

Soil is a dynamic natural body formed as a result of pedogenic processes by changing rock

climates, including minerals and organic elements, with chemical, physical, mineralogical and biological properties, with varying depth of surface, and providing medium to plant growth

\*Corresponding author: E-mail: [amreen.hasan@shiats.edu.in](mailto:amreen.hasan@shiats.edu.in);

[1]. Soil is a finite and non-renewable resource that decides whether agricultural development programmes can be implemented in each country on the planet. Because of urbanization infrastructural expansion, industrial growth, and land degradation losses due to rapid erosion and secondary salinization, the arable land area has been shrinking [2].

Generally, the soil types of Rajasthan are sandy, saline, alkaline, and calcareous soils and were commonly called clay, loamy, and black lava soils. Groundwater level is very low because the annual rainfall is approximately 360 mm and the ground water level is very deep. Water is available at depths of 100 to 61 meters. India Rajasthan is divided into three agro-climate zones: Zone VI, Trans-Gangetic Plains region, Zone VIII, Central Plateau and Hills region, and Zone XIV, region of Western Dry. The soil of the Rajasthan region is classified as Aridisols, Alfisols, Entisol, Inceptisols and Vertisol according to the USDA Land Division program [3]. The capital of Rajasthan is the state of Jaipur and Jaipur is located between 26°55'10" N and 75°47'16" E. Jaipur has an average height of 1414 feet from sea level and Jaipur 11,152 km<sup>2</sup>. The weather in Jaipur is desert. The average annual temperature is 25.2°C. The average rainfall in the Jaipur region is estimated at 650 mm. This type of climate and climate are applicable to kharif plants for example pearl millet, groundnut, cluster bean, sorghum, green gram and rabies plants wheat, mustard, barley, gram, pea, rapeseed, and taramira. As a result, current research was conducted to examine the visible soil structures from different blocks in the Jaipur region [4].

The physical condition of a soil determines its support capacity [5], ease of root penetration [6], air circulation, water storage capacity [7], drainage, nutrient retention, among other factors [8]. Among the main physical properties that influence crop development, the study by Olivares et al. [8] points out that the Color of the soil is one of the characteristics that allows describing the different types of soils. Soil color does not have a direct effect on plant growth, but it indirectly affects soil temperature and moisture. The greater the amount of heat energy found in the soil, the higher the temperature and evaporation will be. It has been proven that dark soils under the same environmental conditions and without plant cover, tend to dry out faster. On the other hand, moist soils are darker than those that are dry, in addition to absorbing more

light that helps increase soil temperature and accelerate crop development.

On the other hand, Olivares [9] establishes that the texture of the soil indicates the proportion of the fundamental particles of the soil: clay, silt and sand, which can be grouped into fine, medium and coarse, and also influences the quantity and availability of water. and nutrients, as well as in aeration, drainage and accessibility in the use of agricultural implements.

Also, soil moisture, according to Olivares et al. [8] is referred to the amount of water available for the plant. Said content can vary according to the type and amount of clay and the percentage of OM found in the soil. The greater amount of clay and/or OM, the greater amount of retained water; that is why sandy soils tend to saturate more quickly than clay. It is important to know the irrigation management in the crop based on the type of soil and to avoid water stress that affects yield such as potato [10], corn [11], onion [12,13] and other crops [14,15].

The percentage of porosity is high in fine-textured soils with a higher proportion of micropores [16], which favors greater moisture retention in relation to a sandy soil [17]. On the other hand, as bulk density increases, porosity decreases and directly influences soil aeration, leading to a decrease in root development in extreme cases. Pores with diameters of 0.2 to 0.3 mm limit root growth [18].

Soil compaction refers to the reduction of soil porosity, increasing its bulk density [9]. Therefore, the compaction phenomenon limits the space for the storage or movement of air and water within the soil. In addition, it is one of the main causes of physical restriction for the radical growth of crops. The soils most prone to compaction are fine to medium textured soils compared to coarse textured soils. Similarly, soils with low organic matter content or with high moisture content are more susceptible to it [9]. The greatest compaction damage is found in agricultural fields in which intensive agriculture is practiced (high use of agricultural machinery); Compaction problems are normally found at different depths, depending on the type of implement used in soil preparation [10].

## 2. MATERIALS AND METHODS

State Rajasthan is situated at north side in India. The Rajasthan state 3,42,239 km<sup>2</sup> geographical area and it this is 10.4% of India's total

geographical area. The Rajasthan state 27° 23'28" North latitude and 73° 25'57" East longitude on the map. It is a largest state of India. Rajasthan's district of Jaipur 26° 55'10" N latitude and 75° 47'16" E longitude is present on the Map. The all- study area was marked and divided in 3 blocks and in each block where selected 3 villages from the Jaipur district, they are Keshav Nagar (V<sub>1</sub>), Morija (V<sub>2</sub>), Nindola (V<sub>3</sub>) in Chomu block (B<sub>1</sub>), Goner (V<sub>4</sub>), Shrikishanpura (V<sub>5</sub>) and Durgapura (V<sub>6</sub>), block in Sanganer (B<sub>2</sub>), and Shivpuri (V<sub>7</sub>), Manoharpur (V<sub>8</sub>), Nwalpura (V<sub>9</sub>), block in Shahpura (B<sub>3</sub>). At collection of soil sampling site-, twenty-seven soil samples were collected at different depths of 0-15 cm, 15-30 cm and 30-45 cm.

**Collection of Soil Sample:** Soil samples were collected randomly from a site using Khurpi and Phawrah and Auger the depth of (a) 0-15 cm, (b) 15-30 cm, (c) 30-45 cm. Composite soil samples (by the process of conning and quartering method) was collected by Stratified soil sampling method [19,20,21] and processed to analyzed the physical properties.

The detailed information is as follows:

- ❖ The grid soil samples at desired depth were taken as per the objective of the experiments.
- ❖ Record of latitude and longitude were maintained using GPS.
- ❖ The soil samples were collected with Khurpi, Phawrah and Auger.

**Process of Soil Sampling:** After collecting the soil samples, they were brought to the laboratory. These samples were dried under shade. After that the processing was done as follows:

- After the air drying under shade the unwanted materials like roots, stones, and others are should be discard.
- The clods in the sample would be broken by using the wooden mallet.
- After that the samples should be sieved with 2 mm sieve.

Analysis of physical properties Laboratory experiment which carried out in Department of soil science & Agricultural chemistry, Naini Agricultural Institute, Sam Higginbottom University of Agriculture, Technology and Sciences, Prayagraj, (U.P.) India.

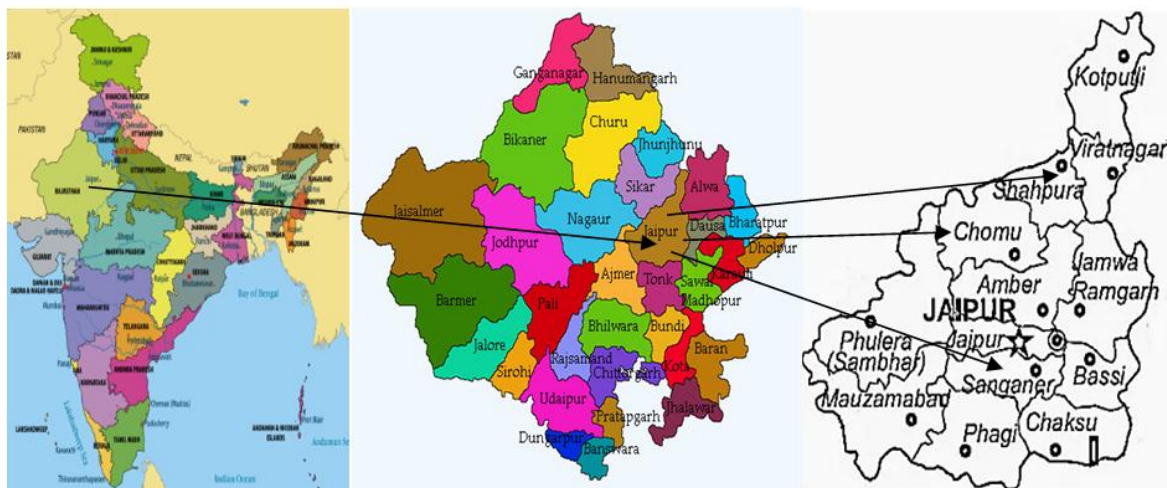


Fig. 1. Soil sampling sites in 3 blocks from Jaipur District, Rajasthan, India

## 2.1 Methods of Analysis

S. No.	Parameter	Method
1.	Soil Texture	Bouyoucos Hydrometer
2.	Soil Colour	Munsell Colour chart
3.	Bulk Density (Mg m <sup>-3</sup> )	100 ml measuring Cylinder
4.	Particle Density (Mg m <sup>-3</sup> )	100 ml measuring Cylinder
5.	Pore Space (%)	100 ml measuring Cylinder
6.	Water Holding Capacity (%)	100 ml measuring Cylinder
7.	Specific gravity	R.D. Bottle Method

(Source: Soil Plant and Water Analysis, P.C. Jaiswal, [22])

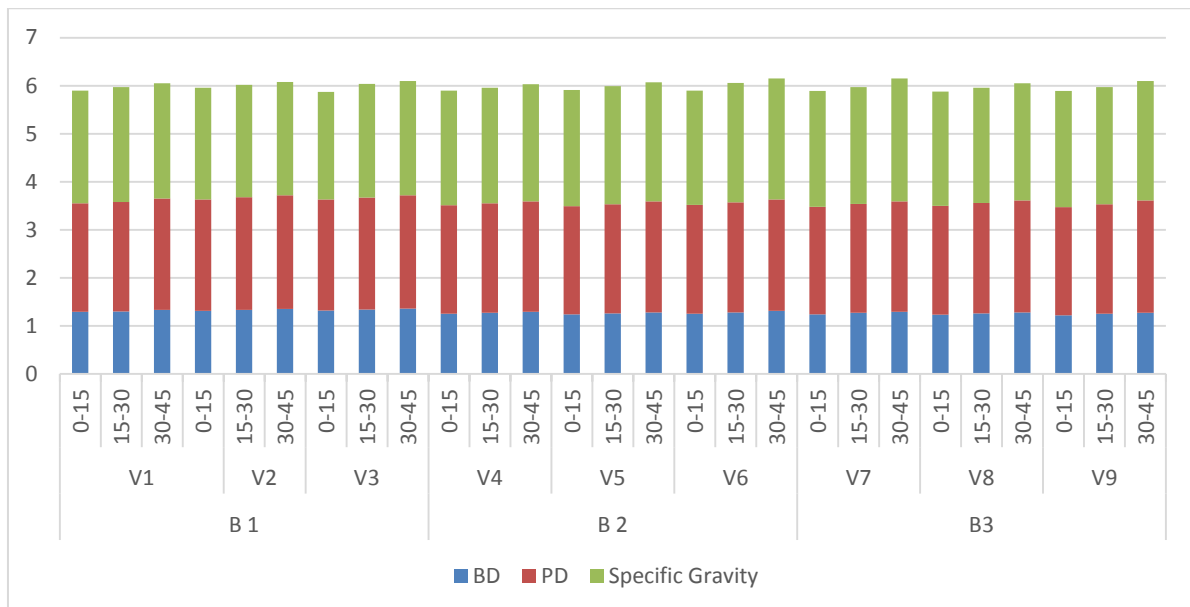
### 3. RESULTS AND DISCUSSION

#### 3.1 Physical Properties

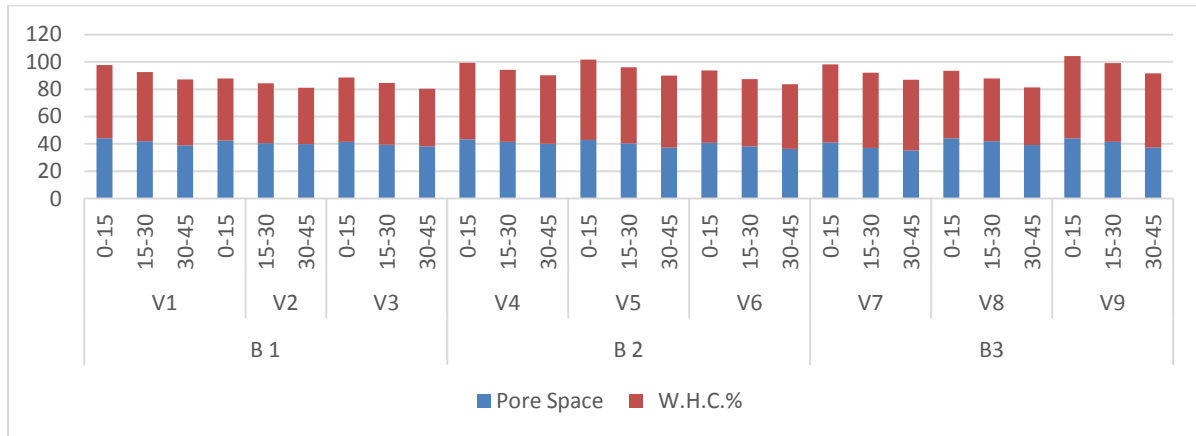
The results showed in soils from different villages of most of Jaipur district soils, Sandy Loam Texture was discovered at three depths (0-15 cm, 15-30 cm, and 30-45 cm) (Table 2). The percentages of sand, silt, and clay ranged from 60.11 to 72.60 percent, 13.35 to 24.59 percent, and 12.35 to 15.62 percent, respectively (Table 2). Same type result finding by Mehta et al., [23], Meena et al., [24], and Choudhary et al., [25]. The soil color of soil also noticed in both the Air-dry condition and wet condition. The Soil color was Light Yellowish-Brown (10YR6/4) color to brownish yellow (10YR5/8) (Table 3). Similar results were reported by Mehta et al., [23] and Choudhary et al., [25]. The results showed in soils from different villages. The maximum bulk density was  $1.35 \text{ Mg m}^{-3}$  at 30-45 cm in village Morija ( $V_2$ ), and the lowest bulk density was  $1.22 \text{ Mg m}^{-3}$  at 0-15 cm in village Nwalpura ( $V_9$ ). with increasing soil depths, the bulk density increases (Table 1, Fig. 2). Meena et al., 2017, Urmila et al., 2018, and Choudhary et al., 2021 all reported similar findings. At depth 30-45 cm in village Morija ( $V_2$ ), the maximum particle density was  $2.37 \text{ Mg m}^{-3}$ , while at 0-15 cm in village Shivpuri, the minimum particle density was  $2.24 \text{ Mg m}^{-3}$  ( $V_7$ ). Bulk density is lower than particle density

(Table 1, Fig. 2). Meena et al., 2017, Urmila et al., 2018, and Choudhary et al., 2021 all reported similar findings.

The largest percent pore space was reported at 0-15 cm in village Keshav Nagar ( $V_1$ ), while the smallest percent pore space was measured at 30-45 cm in village Shivpuri ( $V_7$ ). The % pore space decreases sharply as depth increases (Table 1, Fig. 3). Similar findings were reported by Meena et al., [24], Urmila et al., [26], and Choudhary et al., [25]. The maximum water holding capacity was found 60.12% at 0-15cm in village Nwalpura ( $V_9$ ) and minimum water holding capacity % was found 41.27% at 30-45 cm in village Morija ( $V_2$ ) (Table 1, Fig. 3). These variations were due to clay, silt and organic carbon content and low Water holding capacity in sandy soils due to high sand and less clay content. Similar results were reported by Urmila et al., [26], Pusty & Panda, [27], and Choudhary et al., [25]. However in Village Shivpuri ( $V_7$ ) had the highest specific gravity of 2.56 at 30-45 cm, while village Morija had the lowest specific gravity of 2.33 at 0-15 cm ( $V_2$ ) (Table 1, Fig. 2). Clay, silt, and organic carbon concentration all played a role, as did low Water holding capacity in sandy soils due to high sand and low clay content Sahu and David, [28], and Choudhary et al., [25].



**Fig. 2. Status of bulk density, particle density and specific gravity of different blocks (villages) of Jaipur, Rajasthan**



**Fig. 3. Status of pore space % and water holding capacity % of different blocks (villages) of Jaipur, Rajasthan**

**Table 1. Bulk density ( $Mg\ m^{-3}$ ), Particle density ( $Mg\ m^{-3}$ ), and % Pore space, Water holding capacity %, Specific Gravity of soil in different villages of Jaipur at 0-15 cm, 15-30 cm and 30-45 cm depths**

Blocks	Villages	Depth (cm)	BD ( $Mg\ m^{-3}$ )	PD ( $Mg\ m^{-3}$ )	Pore Space (%)	W.H.C.%	Specific Gravity
B <sub>1</sub>	V <sub>1</sub>	0-15	1.29	2.26	44.17	53.41	2.35
		15-30	1.30	2.28	41.86	50.70	2.39
		30-45	1.33	2.32	38.92	48.16	2.40
	V <sub>2</sub>	0-15	1.31	2.32	42.35	45.53	2.33
		15-30	1.33	2.35	40.55	43.89	2.34
		30-45	1.35	2.37	39.77	41.27	2.36
	V <sub>3</sub>	0-15	1.32	2.31	41.42	47.24	2.24
		15-30	1.34	2.33	39.49	44.99	2.37
		30-45	1.36	2.36	38.13	42.13	2.38
B <sub>2</sub>	V <sub>4</sub>	0-15	1.25	2.26	43.49	55.86	2.39
		15-30	1.27	2.28	41.42	52.70	2.41
		30-45	1.29	2.30	40.04	50.05	2.44
	V <sub>5</sub>	0-15	1.24	2.25	42.84	58.89	2.42
		15-30	1.26	2.27	40.36	55.75	2.46
		30-45	1.28	2.31	37.36	52.66	2.48
	V <sub>6</sub>	0-15	1.25	2.27	40.92	52.89	2.38
		15-30	1.28	2.29	38.23	49.04	2.49
		30-45	1.31	2.32	36.29	47.39	2.52
B <sub>3</sub>	V <sub>7</sub>	0-15	1.24	2.24	41.00	57.24	2.41
		15-30	1.27	2.27	37.17	54.97	2.43
		30-45	1.29	2.30	35.23	51.78	2.56
	V <sub>8</sub>	0-15	1.23	2.27	43.98	49.50	2.38
		15-30	1.26	2.30	41.92	45.90	2.40
		30-45	1.28	2.33	39.24	42.15	2.44
	V <sub>9</sub>	0-15	1.22	2.25	44.09	60.12	2.42
		15-30	1.25	2.28	41.56	57.44	2.44
		30-45	1.27	2.34	37.23	54.30	2.49
F-test	Due to depths	S	S	S	S	S	
S.Ed.(±)	Due to depths	0.02	0.02	0.45	1.77	1.75	
	Due to site	0.03	0.03	0.62	5.45	5.42	
C.D.at 5%	Due to depths	0.004	0.006	0.092	0.005	0.007	
	Due to site	0.010	0.001	0.53	0.002	0.004	

**Table 2. Soil Texture in different villages of Jaipur at 0-15 cm, 15-30 cm and 30-45 cm depths**

<b>Blocks</b>	<b>Village</b>		<b>0-15 cm</b>	<b>15-30 cm</b>	<b>30-45 cm</b>
<b>B<sub>1</sub></b>	<b>V<sub>1</sub></b>	% Sand	67.30%	70.82 %	72.60 %
		% Silt	19.33%	15.42%	13.35%
		% Clay	13.37%	13.76%	12.35%
	<b>V<sub>2</sub></b>	Texture Classes	Sandy loam	Sandy loam	Sandy loam
		% Sand	70.41 %	71.00%	71.91%
		% Silt	16.56%	16.53%	15.09%
		% Clay	13.03%	12.47%	13.00%
		Texture Classes	Sandy loam	Sandy loam	Sandy loam
		% Sand	69.10%	70.99%	69.69%
<b>B<sub>2</sub></b>	<b>V<sub>3</sub></b>	% Silt	16.74%	15.14%	15.22%
		% Clay	14.16%	13.87%	15.09%
		Texture Classes	Sandy loam	Sandy loam	Sandy loam
	<b>V<sub>4</sub></b>	% Sand	66.71%	68.21%	69.15%
		% Silt	19.89%	18.56%	15.98%
		% Clay	13.50%	13.23%	14.87%
	<b>V<sub>5</sub></b>	Texture Classes	Sandy loam	Sandy loam	Sandy loam
		% Sand	67.10%	65.30%	62.50%
		% Silt	19.11%	20.52%	21.88%
<b>V<sub>6</sub></b>	% Clay	13.79%	14.18%	15.62%	
	Texture Classes	Sandy loam	Sandy loam	Sandy loam	
	% Sand	66.85%	70.22%	69.59%	
<b>B<sub>3</sub></b>	<b>V<sub>7</sub></b>	% Silt	20.50%	16.73%	15.01%
		% Clay	12.65 %	13.05%	15.40%
		Texture Classes	Sandy loam	Sandy loam	Sandy loam
	<b>V<sub>8</sub></b>	% Sand	68.37%	66.40%	60.11%
		% Silt	17.93%	18.62%	24.59%
		% Clay	13.70%	14.98%	15.20%
	<b>V<sub>9</sub></b>	Texture Classes	Sandy loam	Sandy loam	Sandy loam
		% Sand	68.33%	69.49%	70.05%
		% Silt	16.07%	15.57%	14.83%
<b>V<sub>9</sub></b>	% Clay	13.60%	14.94%	15.12%	
	Texture Classes	Sandy loam	Sandy loam	Sandy loam	
	% Sand	66.90%	62.40%	63.70%	
		% Silt	19.15%	22.50%	20.67%
		% Clay	13.95%	15.10%	15.63%
		Texture Classes	Sandy loam	Sandy loam	Sandy loam

**Table 3. Shows the color of soil in different villages under dry and wet conditions in Jaipur at depths of 0-15 cm, 15-30 cm, and 30-45 cm**

Blocks	Village	Dry condition			Wet condition		
		0-15 cm	15-30 cm	30-45 cm	0-15 cm	15-30 cm	30-45 cm
B <sub>1</sub>	V <sub>1</sub>	10YR6/4 Light Yellowish Brown	10YR6/6 Brownish yellow	10YR6/8 Brownish yellow	10YR4/3 Brown	10YR4/4 Dark yellowish brown	10YR4/4 Dark yellowish brown
	V <sub>2</sub>	10YR7/6 Yellow	10YR7/6 Yellow	10YR6/8 Brownis yellow	10YR5/6 Yellowish brown	10YR5/6 Yellowish brown	10YR5/8 Yellowish Brown
	V <sub>3</sub>	10YR6/4 LightYellowishBrown	10YR6/6 Brownish yellow	10YR6/6 Brownisyellow	10YR,5/8 YellowishBrown	10YR4/6 Dark yellowish brown	10YR4/6 Dark yellowish brown
B <sub>2</sub>	V <sub>4</sub>	10YR6/4 Light Yellowish Brown	10YR6/4 Light Yellowish Brown	10YR6/6 Brownis yellow	10YR4/4 Dark yellowish brown	10YR4/4 Dark yellowish brown	10YR4/6 Dark yellowish brown
	V <sub>5</sub>	10YR6/6 Brownish yellow	10YR6/8 Brownish yellow	10YR6/8 Brownish yellow	10YR4/3 Brown	10YR4/4 Dark yellowish brown	10YR4/6 Dark yellowish brown
	V <sub>6</sub>	10YR6/6 Brownish yellow	10YR6/8 Brownish yellow	10YR5/6 Yellowish Brown	10YR5/8 Yellowish Brown	10YR4/3 Brown	10YR4/4 Dark yellowish brown
B <sub>3</sub>	V <sub>7</sub>	10YR6/4 Light Yellowish Brown	10YR6/6 Brownish yellow	10YR6/8 Brownish yellow	10YR5/4 Yellowish Brown	10YR5/6 Yellowish Brown	10YR5/8 Yellowish Brown
	V <sub>8</sub>	10YR6/6 Brownish yellow	10YR5/6 Yellowish Brown	10YR5/8 Yellowish brown	10YR5/6 Yellowish Brown	10YR4/4 Dark yellowish brown	10Y4/6 Dark yellowish brown
	V <sub>9</sub>	10YR6/6 Brownish yellow	10YR6/8 Brownish yellow	10YR5/8 Yellowish brown	10YR4/3 Brown	10YR4/4 Dark Yellowish brown	10YR3/4 Dark yellowish brown

#### 4. CONCLUSION

The soil of investigated area was sandy loam textured soil. The soil color was light Yellowish-Brown to brownish yellow which signifies a good organic matter. Improve of soil health by using organic manure and bio fertilizers and improve soil physical condition at study area, depth from upper to lower soil layers pore space % decrease because soil compacted, that is not suitable for good soil aeration. Growing Bajara, Mustard, Barley, Wheat, Tomato, Cole crops and Gram crops are suitable at present study area.

#### COMPETING INTERESTS

Authors have declared that no competing interests exist.

#### REFERENCES

- Thakre YG, Choudhary MD, Raut RD. Physicochemical Characterization of Red and Black Soils of Wardha Region, Int. J. Chem. and Phys. Sci. 2012;1(2):60-66.
- Lal R. Soil and Sanskriti. Journal of the Indian Society of Soil Science. 2013; 61:267-274
- Chiroma AK, Singh JS. Soil characteristics and vegetation development of an age series of mine spoil in a dry tropical environment. Vegetation. 2014;97:63–76.
- District Factbook. Rajasthan District Factbook Jaipur district. Key Socio-economic Data of Jaipur district, Rajasthan. District Profile – Krishi Vigyan Kendra, Jaipur; 2019.
- Olivares B. Description of soil management in agricultural production systems in the Hamaca sector of Anzoátegui, Venezuela. La Granja: Revista de Ciencias de la Vida. 2016;23(1):14–24. Available:https://n9.cl/yyp08
- Olivares B, Araya-Alman M, Acevedo-Opazo C, et al. Relationship between Soil Properties and Banana Productivity in the Two Main Cultivation Areas in Venezuela. J Soil Sci Plant Nutr. 2020;20(3):2512-2524. Available:https://doi.org/10.1007/s42729-020-00317-8
- Olivares B, Paredes F, Rey J, Lobo D, Galvis-Causil S. The relationship between the normalized difference vegetation index, rainfall, and potential evapotranspiration in a banana plantation of Venezuela. SAINS TANAH - Journal of Soil Science and Agroclimatology. 2021;18(1):58-64. Available:http://dx.doi.org/10.20961/stjssa.v18i1.50379
- Olivares BO, Calero J, Rey JC, Lobo D, Landa BB, Gómez JA. Correlation of banana productivity levels and soil morphological properties using regularized optimal scaling regression. Catena. 2022;208:105718. Available:https://doi.org/10.1016/j.catena.2021.105718
- Olivares B. Determination of the potential influence of soil in the differentiation of productivity and in the classification of susceptible areas to banana wilt in Venezuela. UCOPress: Spain. 2022;89-111. Available:https://helvia.uco.es/handle/10396/22355
- Olivares B, López M. Normalized Difference Vegetation Index (NDVI) applied to the agricultural indigenous territory of Kashaama, Venezuela. UNED Research Journal. 2019;11(2):112-121. Available:https://doi.org/10.22458/urj.v11i2.2299
- Olivares B, Hernández R, Arias A, Molina JC, Pereira Y. Agroclimatic zoning of corn cultivation for the sustainability of agricultural production in Carabobo, Venezuela. Revista Universitaria de Geografía. 2018a;27(2):139-159. Available:https://n9.cl/ah6c
- Olivares B, Hernández R. Ecoterritorial sectorization for the sustainable agricultural production of potato (*Solanum tuberosum* L.) in Carabobo, Venezuela. Agricultural Science and Technology. 2019;20(2):339-354. Available:https://doi.org/10.21930/rcta.vol20\_num2\_art:1462
- Olivares B, Hernández R, Arias A, Molina JC, Pereira Y. Identificación de zonas agroclimáticas potenciales para producción de cebolla (*Allium cepa* L.) en Carabobo, Venezuela. Journal of the Selva Andina Biosphere. 2018b;6(2):70-82. Available:http://www.scielo.org.bo/pdf/jsab/v6n2/v6n2\_a03.pdf
- Olivares B, Hernández R, Coelho R, Molina JC, Pereira Y. Spatial analysis of the water index: An advance in the adoption of sustainable decisions in the agricultural territories of Carabobo, Venezuela. Revista Geográfica de América Central. 2018;60(1):277-299.



- DOI: <https://doi.org/10.15359/rgac.60-1.10>
15. Montenegro E, Pitti J, Olivares B. Identification of the main subsistence crops of Teribe: A case study based on multivariate techniques. *Idesia*. 2021;39-3:83-94. Available:<http://dx.doi.org/10.4067/S0718-34292021000300083>
  16. Olivares B, López-Beltrán M, Lobo-Luján D. Changes in land use and vegetation in the Kashaama agrarian community, Anzoátegui, Venezuela: 2001-2013. *Revista Geográfica De América Central*. 2019;2(63):269-291. DOI: <https://doi.org/10.15359/rgac.63-2.10>
  17. Olivares B, Lobo DY, Verbist K. Aplicación del modelo USLE en parcelas de erosión bajo prácticas de conservación de suelos y aguas en San Pedro de Melipilla, Chile. *Revista Ciencia e Ingeniería*. 2015;36(1):3-10.
  18. Olivares B, Verbist K, Lobo D, Vargas RY, Silva O. Evaluation of the USLE model to estimate water erosion in an Alfisol. *Journal of Soil Science and Plant Nutrition of Chile*. 2011;11(2):71-84.
  19. Sahrawat N, Nama KS, Choudhary K. Study on Soil Parameters of Selected Sites in Mukundara Hills National Park, Kota, Rajasthan. *Int. J. Pure App. Biosci*. 2008;4(4):316-320.
  20. Sahrawat R, Gurjar PC, Meena RK, Meena KC, Singh B, Kothiyari HS. Evaluation of physico-chemical properties of soil in Karauli district of Rajasthan. *Journal of Pharmacognosy and Phytochemistry*. 2011;9(2):392-396.
  21. Chander P, Middha R, Jain S, Juneja SK. A Comparative Study of Physico-Chemical Parameters of Restored and Unrestored Soils of Two Villages of Chaksu Block, Jaipur, Rajasthan. *International Journal of Engineering Technology Science and Research*. 2013;2:9-13.
  22. Jaiswal PC. Soil, Plant and Water Analysis. 2011;72-132.
  23. Mehta KM, Shankaranarayana HS, Jaisinghani CJ. Study of Pedo Genesis of soils of Jaipur district (Rajasthan). *Soil Science and Plant Nutrition*. 2012;8(5):32-38.
  24. Meena RS, Mathur AK. Distribution of Micronutrients in Soil of Garhi Tehsil, Banswara District of Rajasthan. *International Journal of Current Microbiology and Applied Sciences*. 2017;6(8):3765-3772.
  25. Choudhary A, Thomas T, Swaroop N. Assessment of physical properties of soil from different blocks of Jaipur district, Rajasthan, India. *The Pharma Innovation Journal*. 2021;10(11):2630-2633.
  26. Urmila P, Singh HS, Meena D, Jain SC, Kumar HK, Amit, Verma SN. Effect of tillage on Physico-chemical indices of soil of southern Rajasthan. *International Journal of Chemical Studies*. 2018;6(4):2490-2493.
  27. Pusty SK, Panda RB. Effect of shifting cultivation on physical & chemical properties of soil in Odisha, India. *International Journal of Recent Scientific Research*. 2019;10(10):35257-35260.
  28. Sahu VK, David AA. Soil health assessment of research farm of Allahabad School of Agriculture SHIATS-DU Allahabad, the Allahabad farmer LXIX, No.2; 2014.

© 2022 Sharma et al.; This is an Open Access article distributed under the terms of the Creative Commons Attribution License (<http://creativecommons.org/licenses/by/4.0>), which permits unrestricted use, distribution, and reproduction in any medium, provided the original work is properly cited.

*Peer-review history:*  
The peer review history for this paper can be accessed here:  
<https://www.sdiarticle5.com/review-history/87920>