



Evaluation of Tree Volume Equations for *Gmelina arborea* Roxb. Stand in Southwestern, Nigeria

Y. I. Egonmwan^{a++*} and W. O. Orukpe^a

^a Department of Forest Resources and Wildlife Management, University of Benin, Benin City, Nigeria.

Authors' contributions

This work was carried out in collaboration between both authors. Both authors read and approved the final manuscript.

Article Information

DOI: 10.9734/AJRAF/2022/v8i4189

Open Peer Review History:

This journal follows the Advanced Open Peer Review policy. Identity of the Reviewers, Editor(s) and additional Reviewers, peer review comments, different versions of the manuscript, comments of the editors, etc are available here: <https://www.sdiarticle5.com/review-history/93600>

Original Research Article

Received 14 October 2022
Accepted 21 December 2022
Published 28 December 2022

ABSTRACT

Effective and sustainable forest management is dependent on volume and yield models. This study was carried out to evaluate ten (10) different tree volume equations for the sustainable management of the *Gmelina arborea* stand in Oluwa forest reserve. A total of 590 trees were used in this study. The observed volume of the sample trees were calculated by the application Newton's formula. The performance of each model were evaluated using five fit statistics such as root mean squared error (RMSE), r-squared (R^2), Akaike Information Criterion (AIC), Bayesian Information Criterion (BIC) and relative rank sum were used. All the models in this study performed significantly well in volume estimation as the R^2 were above 75% for all the models. Four models (model 10, 8, 6 and 7) performed best for the data set based on their evaluation statistics and as such they were selected for volume estimation of *Gmelina arborea* stand in Oluwa forest reserve. The evaluation test revealed that model 10 had the least RMSE of 0.2986, hence it was ranked the best model for the study. Scatter plots showed positive correlation between DBH, total height, BA and total volume. The regression residuals were normally distributed, with constant variance and a zero mean.

Keywords: *Gmelina arborea*; evaluation; residuals; total volume.

⁺⁺ORCID: <https://orcid.org/0000-0001-6516-8881>

*Corresponding author: E-mail: egonmwanyoung22@gmail.com;

1. INTRODUCTION

“The importance of volume equations is indicated by the existence of numerous such equations and the constant search for their improvement. Volume equations play a significant role in forest management. The purpose of any volume equation is to furnish accurate estimates with acceptable levels of local bias over the whole diameter range in the data. Equations that provide accurate predictions of volume without local bias over the entire range of diameter are one of the basic building blocks of a forest growth and yield simulation system” [1]. According to Avery and Burkhart [2], “volume equations are used to estimate average content of standing trees of various sizes and species. Volume equation of current growing stock and future growth potential are both vital information for forest management”.

“Tree volume equations are simple methods and tools that can be used to obtain individual tree volume and the volume of entire stand. An equation is a mathematical statement setting two algebraic expressions equal to each other” [3]. “Volume equation is the various Mathematical statements applied to the determination of quantities. Tree volume equations are mathematical expressions which relate tree volume to tree’s measurable attributes such as diameter and height” [3].

“Sustainable forest management requires estimates of growing stock, flexible and accurate models that can determine the volume of standing trees, individual log and the entire stands. Such information guides forest managers in timber valuation as well as in allocation of forest areas for Harvest” [4]. Few or no substantial work on volume equations for the plantation grown *Gmelina* species in Oluwa forest reserve has been done, hence the need for this study.

“*Gmelina arborea* (Roxb.) belongs to the family Vabenaceae. *Gmelina arborea* is an unarmed, moderately sized to large deciduous tree with a straight trunk” [5]. “It has wide spreading crown forming a large shady crown, with numerous branches, attains a height of 30m or more and a diameter of up to 4.5 m. Bark smooth, pale ashy-grey or grey to yellow with black patches and conspicuous corky circular lenticels” [6]. “The flowers of *Gmelina* species are abundant, scented, reddish, brown or yellow, in terminal and axillary 1- to-3-flowered cymes on the

panicle branches, which are about 8-40 cm long” [7]. Seeds are 1-3, lenticular, exalbuminous. The genus was named after J.C. Gmelin, an 18th-century German botanist. The specific name means tree-like, from the Latin ‘arbor’ (tree). The aim of this study was to develop tree volume equations for the effective management of the *Gmelina arborea* stand in Oluwa forest reserve, Ondo State, Nigeria and in other regions with similar vegetation and environmental factors.

2. METHODOLOGY

2.1 Study Area and Data

The data used in this study were from the *Gmelina* plantation (about 9 ha in size) in the Oluwa Forest Reserve (FR) of Southwestern Nigeria. The Oluwa FR is situated between 6° 55' and 7° 20' N and longitude 3° 45' and 4° 32' E, and occupies an area of 87,816 ha [8]. “Oluwa FR has an annual rainfall in the range 1700 to 2200 mm, an average annual temperature of 26°C, and a mean elevation of 123 m above sea level” [9]. “Establishment of large-scale plantations in the reserve started in early 1960s. *Gmelina arborea* Roxb. and *Tectona grandis* L.f. are the dominant plantation species in Oluwa FR” [10].

2.2 Method of Data Collection

Data were collected from twenty-five temporary sample plots of 0.04 ha in five stands (aged 19, 24, 29, 34, and 39 years) in the *Gmelina* stand. “Diameter measurements of all trees (outside bark) at breast height (1.3 m above ground, DBH) were measured with diameter tape to an accuracy of 0.1 cm. Their corresponding height (H) measurements were also taken with Spiegel relaskop. The measured variables were used to calculate the stand basal area (m^2) and the observed Newton’s tree volume (m^3). Selective sampling design was adopted and a total of 590 trees with desirable characteristics were purposively selected for enumeration. Healthy trees with more typical growth form and trees that would allow a clear view along most of the stem were selected, dead trees and trees with abnormalities such as limb, bulge, leaning trees, trees that are forked were avoided. From the forest reserve, the following measurements were taken: stump diameter; diameter at the breast height; middle diameter; top diameter and total height of all the selected trees in the reserve” [10].

Table 1. Application of the volume equations

Model No	Model Form	Eq.
1	$V = (\beta_0 d^2 H) + (\beta_1 d^2) + \beta_2$	5
2	$V = \beta_0 + \beta_1 d^2 H$	6
3	$V = \beta_0 (d^2 H)^{\beta_1}$	7
4	$V = \beta_1 d^2 H$	8
5	$V = \beta_0 + \beta_1 d + \beta_2 d^2$	9
6	$V = \beta_1 d^{\beta_2} H^{\beta_3}$	10
7	$V = \beta_0 + \beta_1 H + \beta_2 d + \beta_3 d^2 + \beta_4 d^2 H + \beta_5 dH$	11
8	$V = \beta_0 + \beta_1 d^{\beta_2} H^{\beta_3}$	12
9	$V = \beta_0 + \beta_1 (d) + \beta_2 (dH) + \beta_3 (H)$	13
10	$V = \beta_0 + \beta_1 d^2 H^{\beta_2} + \beta_3 (dH) + \beta_4 (BA) + \beta_5 (CL)$	14

V = Total volume, d = Dbh at 1.3m from ground level, CL = Crown Length, H = Total height, BA = Basal Area, $\beta_0, \beta_1, \beta_2, \beta_3, \beta_4, \beta_5$ regression coefficients

2.3 Volume Models Development

On the basis of reviews from past studies on tree volume models in miombo woodlands [11,12], the general mensuration literature [13] and on extensive initial testing, ten model forms were selected and tested further. All of the models included diameter at breast height (dbh) and total height (Tht) with addition of Basal Area (BA) and Crown Length (CL) in model 10 as the independent variables. The volume models used in this study are comprised of multiple linear regression models (Table 1 above). The datasets were handled with R-script using package ‘lm’ of R-environment (R Core Team 2017), to generate parameter estimates.

2.4 Model Evaluation

The models were evaluated in order to test their plausibility and also recommend them for further use. The models were assessed based on r-squared (R^2), root mean square error (RMSE), Akaike Information Criterion (AIC), Bayesian Information Criterion (BIC) and relative rank sum $\sum R$. Model selection was based on the criterion that the higher the R^2 , smaller the values of (RMSE), (AIC), (BIC), the better the model. Residuals were also graphically examined to check for any trend. A rank score between 1 to 10 was assigned to each model based on each criterion [14]. The smaller the rank the better the performance of the model. The evaluation statistics are represented below as:

$$R^2 = 1 - \frac{SS_{res}}{SS_{tot}} \tag{1}$$

$$RMSE = \sqrt{\frac{\sum_{i=1}^n (Y_i - \hat{Y}_i)^2}{n}} \tag{2}$$

$$AIC = n \ln \left(\frac{RSS}{n} \right) + 2p \tag{3}$$

$$BIC = n \ln \left(\frac{RSS}{n} \right) + p \ln n \tag{4}$$

Where: R^2 = Coefficient of determination, SS_{res} = Residual sum of squares, SS_{tot} = Total sum of squares, RSS = residual sum of square, n = sample size, p = number of parameters; Y_i is the observed value and \hat{Y}_i is the theoretical value predicted by the model.

3. RESULTS

Ten (10) multiple linear regression tree stem volume equations were developed for *Gmelina arborea* plantation in this study. The models were assessed and evaluated to ensure their adequacy for the prediction of total volume of *Gmelina arborea* trees in Oluwa FR.

Summary statistics of the modelling data set is presented in Table 2.

The Ten volume models developed for total volume and their evaluation criteria are thus presented in Table 3. The results from the evaluation criteria showed that all the models performed well in predicting total volume. However, four (4) models (model 10, 8, 6 and 7) out of the Ten (10) models was rated the best for estimation of total volume of *Gmelina arborea*. The coefficient of determination (R^2) for all of the models were greater than of 75%, while for the selected four best models, the R^2 were 80.4%, 80.3%, 80.2% and 80.3% respectively.

3.1 Scatter Plots

The results of fitted plots of volume against diameter at breast height (Dbh), total height (THT) and basal area (BA) revealed a

positive correlation as indicated in the upward spread (Figs. 1, 2 & 4), while crown length showed a negative correlation (Fig. 3) with no coherent spread in its correlation suggesting that it is a poor variable in estimating volume for the Oluwa Forest reserve data.

3.2 Volume Models Developed and the Output Summary

The Ten volume models were evaluated for total volume and their assessment criteria are thus presented in Table 3. The results of the model assessment criteria shows that four (4) models (model 10, 6, 8 and 7) out of the Ten (10) models were adjudged the best for estimation of total volume of *Gmelina arborea*.

4. DISCUSSION

The observed volume of the sample trees in this study was calculated by applying Newton's formula: $Volume = \frac{\pi h}{24}(Db^2 + 4Dm^2 + Dt^2)$. Ten (10) tree volume models for *Gmelina arborea* plantation trees were developed and tested. To assess the accuracy of various models developed, R^2 , RMSE, AIC, and BIC were calculated for each model and relative ranking ($\sum R$) of the complete values of the fit statistics were also included to facilitate comparison of the models. The single-entry model with crown length was the only variable that did not perform well with the data set, but the single entry model with diameter at breast height; total height and basal area performed very well with the data set and the findings is in line with the combined variable equations of Spurr [15] and the logarithmic of Schamacher and Hall [16] which are classic volume models and commonly used, often without question, when developing stem volume equations.

Most of the models in this study tested, performed similarly to each other. All the models

in this study performed significantly well in volume estimation as the R^2 were above 75% for all the models. However, four models (model 10, 8, 6 and 7) performed best for the data set based on their evaluation statistics and as such are selected for volume estimation of the *Gmelina arborea* stand in Oluwa forest reserve. Residual analysis showed little differences in magnitudes of bias and precision amongst many of the models. Residual plots for the best volume equations generally indicated an even spread of residuals above and below the zero line, with systematic trend (Fig. 5(a-c)). The R^2 result suggests that a very large proportion of the variation in tree volume is explained by diameter at breast height and total height for the stands. The result of RMSE, AIC and BIC shows that the models have good fit and are therefore recommended for tree volume estimation for *Gmelina arborea*. The values for the evaluation statistics are similar to what were obtained by Sonmez et al. [17] and Adam and Csalovics [18].

The scatter-plots were consistent with the results of other statistical indices for validation. This demonstrates that the regression assumptions were upheld. Other tree growth modeling studies, including Andreassen and Tomter [19], Mabvurira and Miina [20], Zhao et al. [21], Trasobares and Pukkala [22], and Sonmez et al. (2009) also observed "no constant variance of residuals, an inevitable phenomenon for forest populations due to the nature of the growth process".

The evaluation test revealed that model 10 had the least RMSE of 0.2986, hence it was ranked the best model for this study (Table 3). This equation is therefore, suitable when there is a need for high precision and accuracy. Model 3 had the highest RMSE and were ranked the highest in this study. However, all the models performed statistically well in predicting total volume for the *Gmelina arborea* stand as they had R^2 greater than 75%.

Table 2. Summary of the modelling datasets

Statistics	DBH (cm)	H (m)	CL (m)	BA (m ²)	VOL (m ³)
Minimum	10.10	5.70	0.80	0.008	0.035
Maximum	52.30	49.70	6.60	0.215	4.685
Mean	24.55	22.08	3.10	0.054	0.674
Standard Deviation	9.05	9.15	1.19	0.039	0.671
Skewness	0.46	0.14	0.57	1.125	1.933
Kurtosis	-0.56	-0.75	-0.24	1.038	5.050
N = 590					

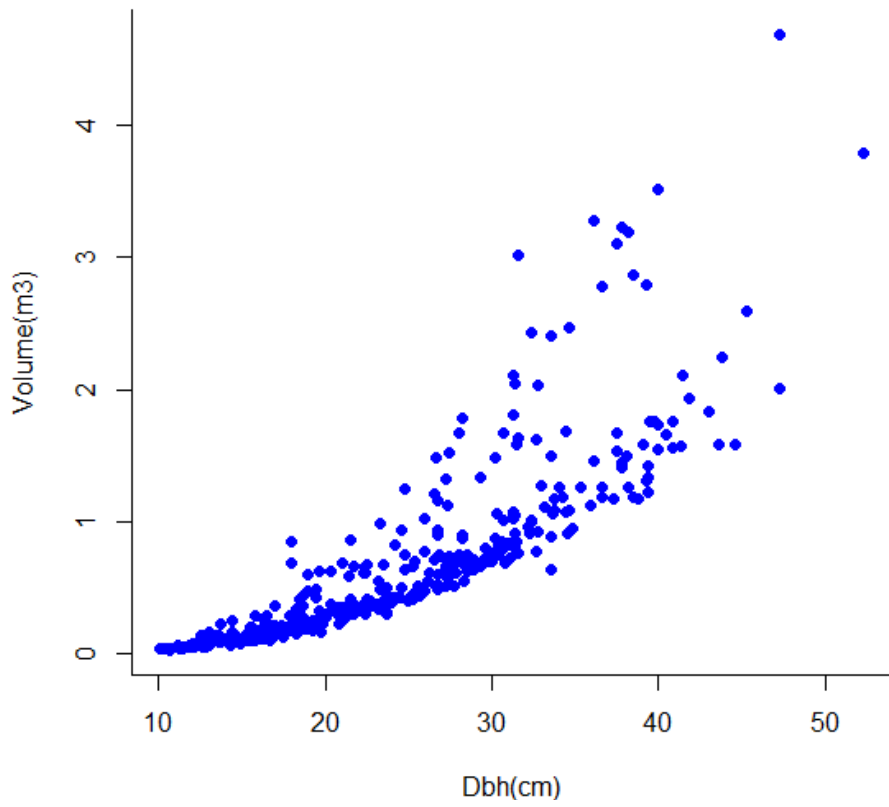


Fig. 1. Volume versus Diameter at Breast Height (DBH) for Gmelina trees

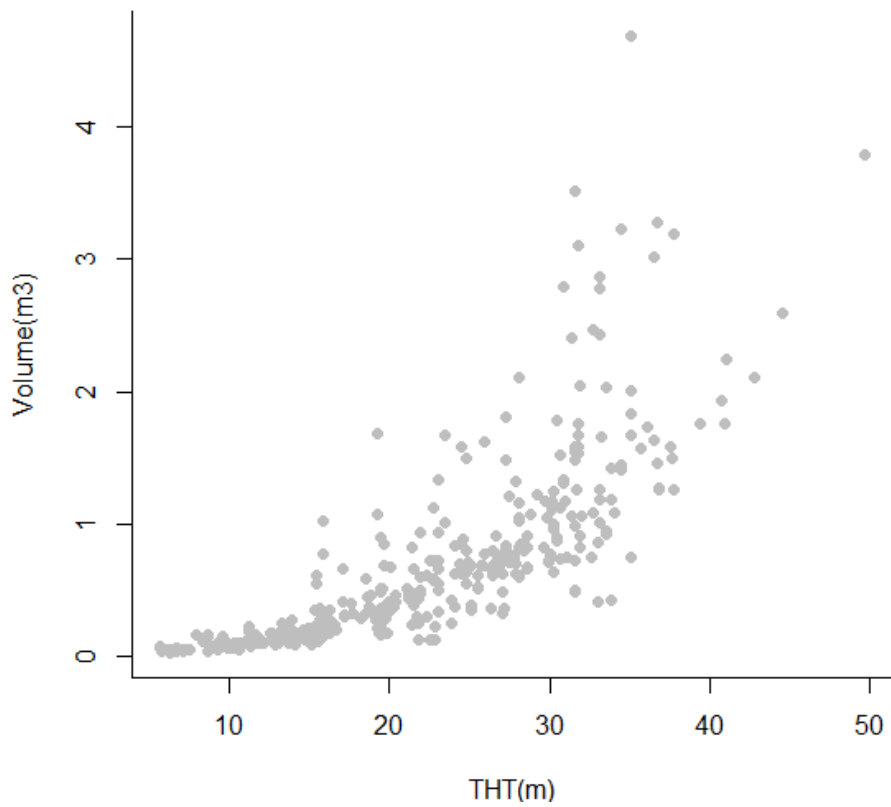


Fig. 2. Volume versus total height for Gmelina trees

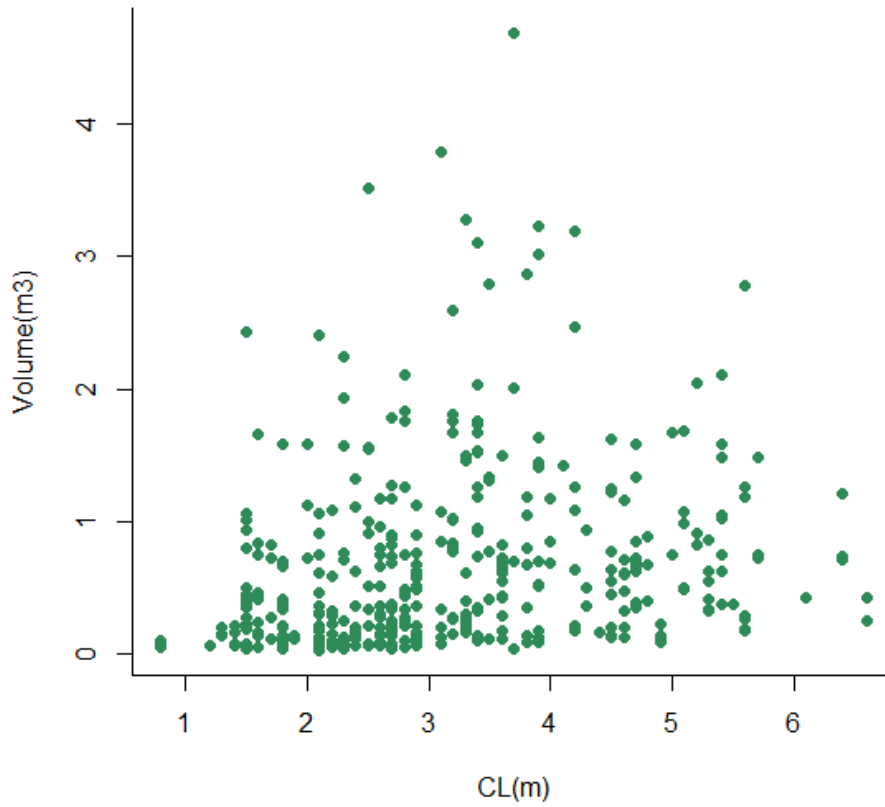


Fig. 3. Volume versus crown length for Gmelina trees

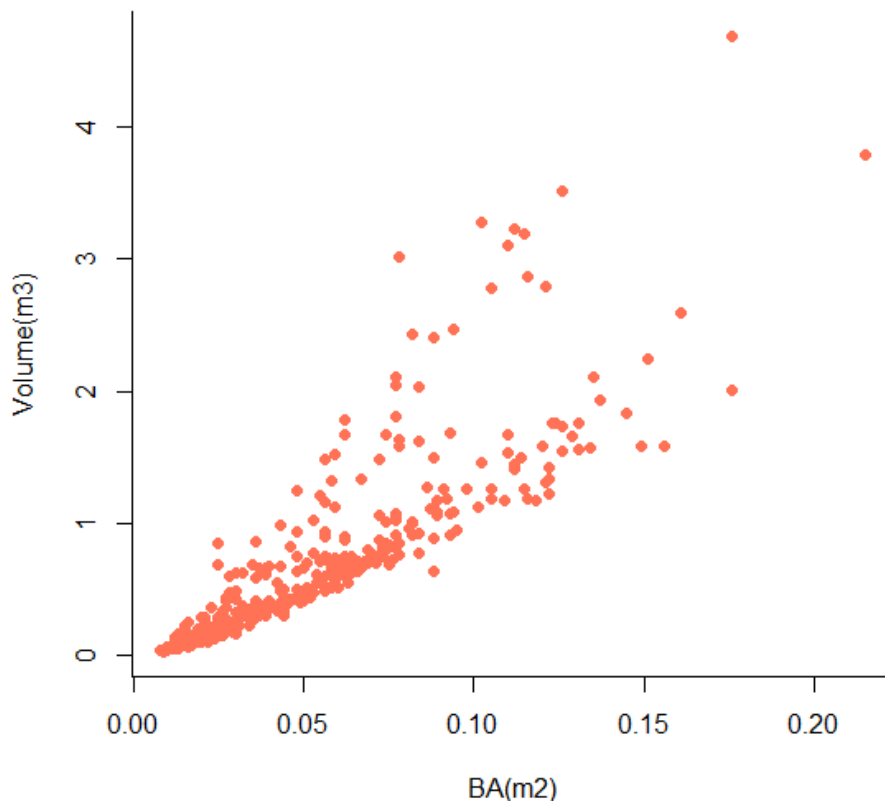
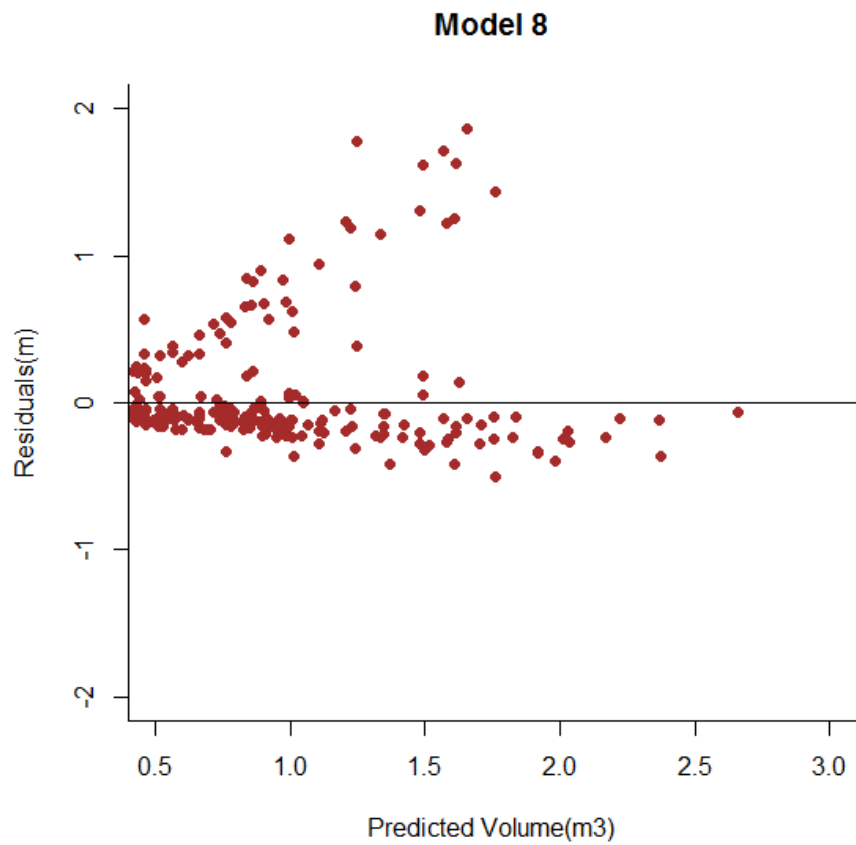
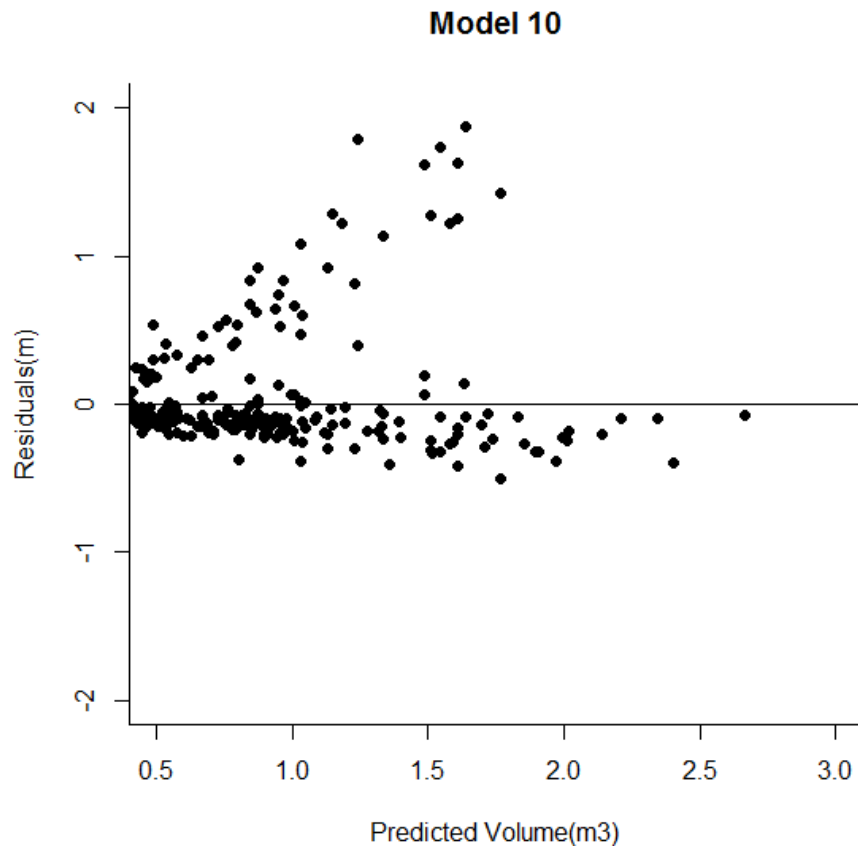


Fig. 4. Volume versus basal area for Gmelina trees

Table 3. Volume models for *Gmelina arborea* in Oluwa Forest Reserve, Ondo State, Nigeria

Models	Parameters						Evaluation Statistics				
	b_0	b_1	b_2	b_3	b_4	b_5	R2	RMSE	AIC	BIC	ΣR
1	0.00001966	0.0004395	-0.0004023				0.799	0.3013	263.9203	281.4408	6
2	0.09821	0.00003031					0.794	0.3050	276.9101	290.0505	7
3	-0.1542	0.001205					0.800	0.3133	308.8864	322.0268	10
4		0.00003280					0.783	0.3128	305.928	314.6883	9
5	0.0258258	-0.0148589	0.0014793				0.784	0.3126	307.3287	324.8492	8
6		0.0001926	1.69300	0.8135			0.802	0.2989	254.3176	271.8381	2
7	0.1237	-0.008821	-0.01558	0.0005707	0.000001384	0.00115	0.803	0.2991	257.9798	288.6406	4
8	-0.0338402	0.0002741	1.6401629	0.7745170			0.803	0.2989	255.3672	277.2678	2
9	0.0736044	0.0013815	0.0018024	-0.024671			0.802	0.2994	257.2119	279.1125	5
10	-0.1168	0.000003733	1.29600	0.0004067	5.31100	0.01972	0.804	0.2986	256.0509	286.7117	1*

b_0, b_1, b_2, b_3, b_4 & b_5 are regression coefficients, R^2 - R Squared, RMSE – Root Mean Square Error, AIC – Akaike Information Criterion, BIC – Bayesian Information Criterion, ΣR – Relative Rank, *Selected Model



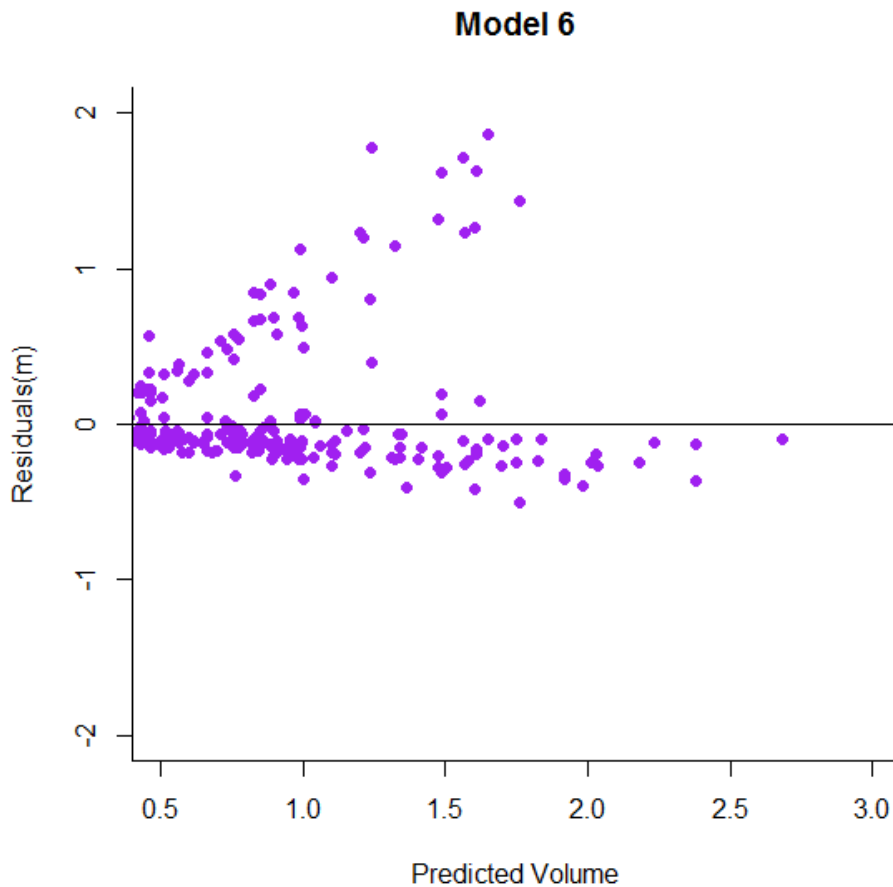


Fig. 5(a-c). Residual plots of the selected models

5. CONCLUSION

This study focused on the evaluation of tree models for estimating volume of *Gmelina arborea* plantation in oluwa forest reserve. Models that uses diameter at breast height and total height as independent variables were most suitable for tree volume estimation. Evaluation statistics revealed that the general total tree models can be applied over a wide range of geographical and biophysical conditions in Nigeria with an appropriate accuracy in predictions. The results of this study indicated that there was a significant positive connection between the dependent variable, total volume, and the independent variables, diameter at breast height (dbh) and total height. Therefore, the entire volume of *Gmelina* trees in the research region may be precisely estimated using dbh and total height. The criteria used to predict the accuracy of the models developed were R^2 , RMSE, AIC, BIC and rank sum. The regression residuals were normally distributed, with constant variance and zero mean. The models used in this study were therefore adjudged efficient for volume estimation based on the evaluation statistics.

ACKNOWLEDGEMENTS

The authors are thankful to Oluwa community for providing the enabling environment and the Department of Forest Resources and Wildlife Management for their support.

COMPETING INTERESTS

Authors have declared that no competing interests exist.

REFERENCES

1. Bi H. Hamilton F. Stem volume equations for native tree species in Southern New South Wales and Victoria. *Australian Forestry*. 1998;61:275-286.
2. Avery TE, Burkhart HE. *Forest measurements*, 5th ed. McGraw-Hill Higher Education, New York, USA. 2002;456.
3. Edward TD. *Introduction to mathematical economics*. McGraw Hill Book Company New York 2nd Edition. 1992:486.

4. Akindele SO, LeMay VM. Development of tree volume equations for common timber species in the Tropical Rainforest Area of Nigeria. *Forest Ecology and Management*. 2006;226:41–48.
5. Roshetko JM, Mulawarman, Purnomosidhi P. *Gmelina arborea* - A viable species for small holder tree farming in Indonesia; 2005.
6. Albrecht J. ed. Tree seed hand book of Kenya. GTZ Forestry Seed Center Muguga, Nairobi, Kenya; 1993.
7. Katende AB, et al. Useful trees and shrubs for Uganda. Identification, Propagation and Management for Agricultural and Pastoral Communities. Regional Soil Conservation Unit (RSCU), Swedish International Development Authority (SIDA); 1995.
8. Ogana FN, Ekpa NE. Modeling the non-spatial structure of *Gmelina arborea* Roxb Stands in the Oluwa Forest Reserve, Nigeria. *Forestist*. 2020;70(2):133–140.
9. Onyekwelu JC, Mosandl R, Stimm B. Productivity, site evaluation and state of nutrition of *Gmelina arborea* plantation in tropical rainforest zone in South-Western Nigeria. *Forest Ecology and Management*. 2006;229:214–227.
10. Egonmwan IY, Ogana FN. Application of diameter distribution model for volume estimation in *Tectona grandis* Lf stands in the Oluwa Forest Reserve, Nigeria. *Tropical Plant Research*. 2020;7(3):573–80.
11. Hofstad O. Review of biomass and volume functions for individual trees and shrubs in southeast Africa. *Journal of Tropical Forest Sciences*. 2005;17:151–62.
12. Henry M, Picard N, Trotta C, Manlay RJ, Valentini R, Bernoux M, Saint-André L. Estimating tree biomass of sub-Saharan African forests: A review of available allometric equations. *Silva Fennica*. 2011;45: 477–569.
13. Philip MS. Measuring trees and forests: A textbook written for students in Africa. Dares Salaam: University of Dares Salaam; 1983.
14. Cao QV, Burkhardt HE, Max TA. Evaluation of two methods for cubic volume prediction for loblolly pine to any merchantable limit. *Forest Science*. 1980;26:71-80.
15. Spurr SH. Forest inventory. Ronald Press, New York. 1952:476.
16. Schumacher FX, Hall FDS. "Logarithmic expression of timber tree volume". *Journal of Agricultural Research*. 1933;47:719-734.
17. Sönmez T, Ercanli I, Kele S. A Distance-independent basal area growth model for oriental spruce (*Picea orientalis* (L.) Link), growing in mixture with oriental beech (*Fagus orientalis*, Lipsky) in the Artvin region. North-East, Turkey. *African Journal of Agricultural Research*. 2009;4: 740–751.
18. Adam HE, Csalovics E. Integration of remote sensing, GIS, and terrestrial forest inventory in estimation of *Acacia senegal* tree parameters. In: Rainer Reuter (Ed), Remote Sensing for Science, Education, and Natural and Cultural Heritage, EARSeL. 2010:6.
19. Andreassen K, Tomter SM. Basal area growth models for individual trees of Norway spruce; Scots Pine; Birch and other broad leaves in Norway. *Forest Ecology & Management*. 2003;180:11–24.
20. Mabvurira D, Miina J. Individual-tree growth and mortality models for *Eucalyptus grandis* (Hill) maiden plantations in Zimbabwe. *Forest Ecology & Management*. 2002;161:231–245.
21. Zhao D, Borders B, Wilson M. Individual-tree diameter growth and mortality models for bottomland mixed-species hardwood stands in the Lower Mississippi Alluvial Valley. *Forest Ecology and Management*. 2004;199:307–322.
22. Trasobares T, Pukkala T. Using past growth to improve individual tree diameter growth models for uneven-aged mixtures of *Pinus sylvestris* L. and *Pinus nigra* Arn in Catalonia, North-East Spain. *Annals For Sci*. 2004;61:409–417.

© 2022 Egonmwan and Orukpe; This is an Open Access article distributed under the terms of the Creative Commons Attribution License (<http://creativecommons.org/licenses/by/4.0>), which permits unrestricted use, distribution, and reproduction in any medium, provided the original work is properly cited.

Peer-review history:
The peer review history for this paper can be accessed here:
<https://www.sdiarticle5.com/review-history/93600>